

Keep your Production Moving with Linear Motion from John Henry Foster

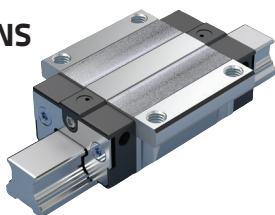
With a complete line of mid-range and premium linear motion products and systems, John Henry Foster offers maximum performance for any application.

Bosch Rexroth Ball Rail Systems Compact Line (BCSL)

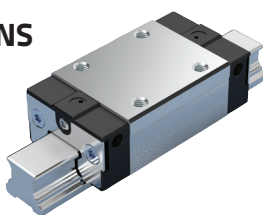
Performance for the Mid-Range Application

Six runner block designs made of steel in accordance with ISO 12090-1

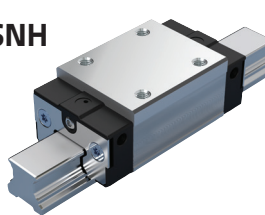
FNS



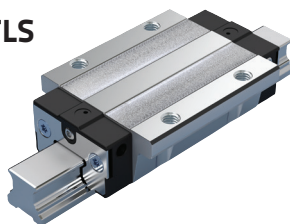
SNS



SNH



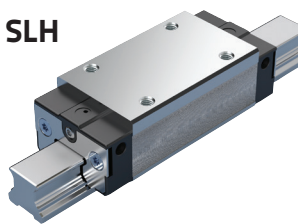
FLS



SLS



SLH

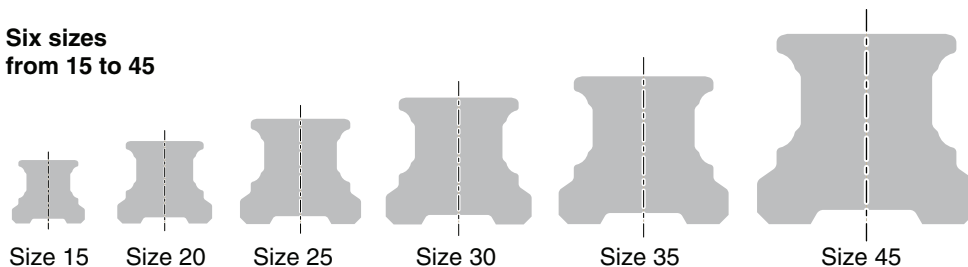


FNS = Flanged, normal, standard height
FLS = Flanged, long, standard height

SNS = Slimline, normal, standard height
SLS = Slimline, long, standard height

SNH = Slimline, normal, high
SLH = Slimline, long, high

**Six sizes
from 15 to 45**



Size 15

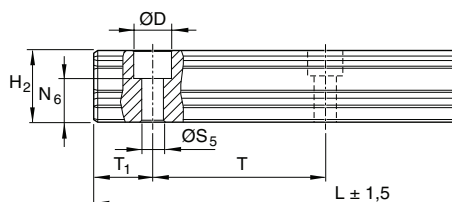
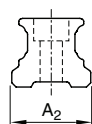
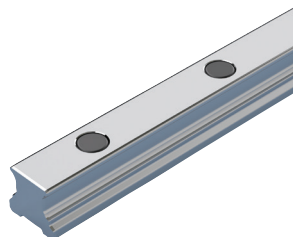
Size 20

Size 25

Size 30

Size 35

Size 45



Three accuracy classes:

- **N** (normal)
- **H** (high)
- **P** (precision)

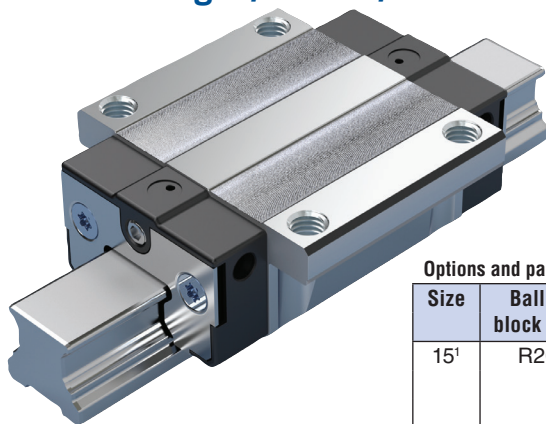
Three preload classes:

- **C0** (without preload)
- **C1** (moderate preload)
- **C2** (average preload)

- Sizes 15 – 45
- 3 Accuracy Classes
- 3 Preload Classes
- High-dynamic Load Capacity
- 8 Lubrication Ports
- Long Distance Performance Between Lubrication Intervals
- Up to 3 Meters Per Second Travel Speed
- Rail processed at JHF for quick delivery

Ball Runner Blocks

FNS – Flanged, normal, standard height R205A ... 2.



In-Stock Part Numbers

Size 15 FNS (R205A-114-20)

Size 20 FNS (R205A-814-20)

Size 25 FNS (R205A-214-20)

Dynamic characteristics

Travel speed: $v_{\max} = 3 \text{ m/s}$

Acceleration: $a_{\max} = 250 \text{ m/s}^2$

(If $F_{\text{comb}} > 2.8 \cdot F_{\text{pr}}$: $a_{\max} = 50 \text{ m/s}^2$)

Note

Can be used on all BSCL ball guide rails KSE-...-SNS

FNS Application Area:
For Normal Rigidity Requirements

Load-Bearing Capacity:
High

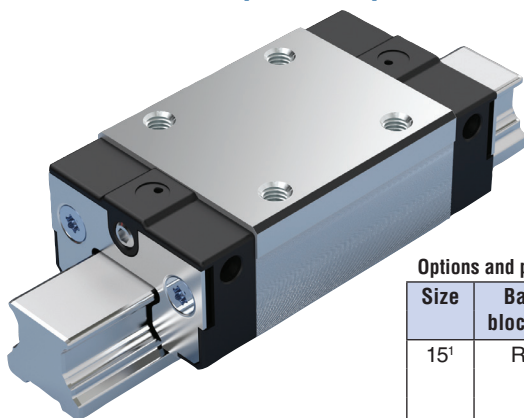
Special Feature:
For Mounting from Above and Below

Options and part numbers

Size	Ball runner block with size	Preload class			Accuracy class			Standard sealing	
		C0	C1	C2	N	H	P	pre-lubricated ¹	non-lubricated
15 ¹	R205A 1	9			4	3	—	20	24
			1		4	3	2	20	24
				2	—	3	2	20	24
20	R205A 8	9			4	3	—	20	24
			1		4	3	2	20	24
				2	—	3	2	20	24
25	R205A 2	9			4	3	—	20	24
			1		4	3	2	20	24
				2	—	3	2	20	24

¹ Being prepared

SNS – Slimline, normal, standard height R205C ... 2.



In-Stock Part Numbers

Size 15 SNS (R205C-114-20)

Size 20 SNS (R205C-814-20)

Size 25 SNS (R205C-214-20)

Dynamic characteristics

Travel speed: $v_{\max} = 3 \text{ m/s}$

Acceleration: $a_{\max} = 250 \text{ m/s}^2$

(If $F_{\text{comb}} > 2.8 \cdot F_{\text{pr}}$: $a_{\max} = 50 \text{ m/s}^2$)

Note

Can be used on all BSCL ball guide rails KSE-...-SNS

SNS Application Area:
For Normal Rigidity Requirements

Load-Bearing Capacity:
High

Special Feature:
For Mounting from Above and Below

Options and part numbers

Size	Ball runner block with size	Preload class			Accuracy class			Standard sealing	
		C0	C1	C2	N	H	P	pre-lubricated ¹	non-lubricated
15 ¹	R205C 1	9			4	3	—	20	24
			1		4	3	2	20	24
				2	—	3	2	20	24
20	R205C 8	9			4	3	—	20	24
			1		4	3	2	20	24
				2	—	3	2	20	24
25	R205C 2	9			4	3	—	20	24
			1		4	3	2	20	24
				2	—	3	2	20	24

¹ Being prepared

Ball Guide Rails



Ball guide rails with rail lengths

Ball guide rails	Size		
	15	20	25
Rail length (mm)			
Ball guide rail KSE-....SNS Standard ball guide rails made of steel R2055	For mounting from above, with plastic mounting hole plugs		
3600 – 4150			

314-427-0600 | 800-444-0522

www.jhf.com

4700 LeBourget Drive | St. Louis, MO 63134-0820